



客 户(CUSTOMER): _____

产 品 承 认 规 格 书

SPECIFICATION FOR APPROVAL

产品名称 (PART NAME): SWITCHING POWER SUPPLY产品型号 (MODEL NO.): IVP0900-3000P内部型号 (Internal Model): IVP030-503-G产品规格 (PART SPEC) : 9V3.0A PSE日 期 (DATE): 2018-06-19版本号 (REVISION): V1.0

客户承认印 (签)

Customer's Approval**Stamp:**

承认日期:

(敬请承认后回返一份 Please return one copies after approval)

生产商/Manufacturer:(签)

制 作	确 认	审 核	批 准
MADE BY	DESIGNED BY	CHECKED BY	APPROVED BY

厦门英诺尔充源电子有限公司

Xiamen Innov Electronics Tech Co., Ltd.

地址: 厦门火炬高新区(翔安)产业区翔岳路4号之12

ADD.: 12, No.4, Xiangyue Road, High tech Industrial Zone, Xiang'an, Xiamen

电话: 0592-7766222

传真: 0592-7766221

E-MAIL: sales@xminnov.com

[illegible]



CONTENTS of APPROVAL SHEET

1. INTRODUCTION
2. INPUT REQUIREMENTS
3. OUTPUT REQUIREMENTS
4. EFFICIENCY
5. DIELECTRIC STRENGTH (Hi-Pot) TEST
6. INSULATION RESISTANCE
7. PROTECTION
8. ENVIRONMENTAL CONDITIONS
9. COOLING
10. BURN-IN
11. REFERENCED STANDARD
- 12.MOUNTING CONNECTORS
- 13.MECHANICAL FEATURES
- 14.DIAGRAM DATA
- 15.CERTIFICATE
- 16.TEST RESULT



1. INTRODUCTION:

This document define a switching power supply electronic process.The switching power supply will provide for technology equipment including electrical business equipment.

2. INPUT REQUIREMENTS:

- 2.1 Operating range: 90-264VAC
- 2.2 Rated Input Voltage :100-240VAC
- 2.3 Input Frequency Range: 50/60Hz +/-3Hz
- 2.4 Input In-rush Current: 30A max
- 2.5 Input Current: 800mA max

3.OUTPUT REQUIREMENTS:

3.1 Output Voltage and Current

Output	Output Regulation(A)		No Load
Voltage(V)	Minimum	Maximum	Voltage(V)
CV:8.0V	2.70A	3.30A	8.90-9.30V

3.2 Output Voltage Regulation

The total output voltage regulation shall be +/-5%,including the effects of line voltage variations,load current,ripple and noise,and the AC component of the load current.

3.3 Output Voltage Ripple

The switching power supply shall not exceed the following limits in the indicated voltage for 60Hz or 50Hz ripple,switching frequency ripple and noise measured with 20MHz width.

Ripple and Noise:50/60Hz Ripple + Switching Ripple and Noise

Output	Ripple
0-3.0A	300mV

Ripple and Noise are measured at the end of output cables which are added a 0.1uF(104) Ceramic capacitor and a 22uF Electrolytic capacitor.

**4. EFFICIENCY:**

When 100VAC line input voltage (100-240 VAC), the efficiency shall be >80% at rating load.

5. DIELECTRIC STRENGTH (Hi-Pot) TEST:

Finished product withstands with AC300Vrms/50Hz, 5mA max, primary to secondary, 1 minute for type test, 1 second for production test.

6. INSULATION RESISTANCE:

Primary to secondary: 100M Ω min at 500VDC.

7. PROTECTION:**7.1 Short Circuit Protection**

If short circuit occurs, all the output should be protected. After the fault, the adapter automatically recovers.

7.2 Over Shoot

The Output over shoot at turn-on shall not exceed 10% of normal voltage value with or without the load connected.

7.3 Start-up time

The start-up time is less than 3 second.

8. ENVIRONMENTAL CONDITIONS:**8.1 Temperature**

Operating temperature: 0°C to +40°C

Storage temperature : -20°C to +60°C

8.2 Humidity

Relative humidity: $\leq 95\%$

8.3 Operating Ambient Altitude

Altitude: 0-3000m

8.4 Operating at the lower temperature

At -0°C, with the rated voltage 100-240Vac charged to the primary and unloaded and full load on the secondary 8 hours, no abnormality in electric and mechanical characteristic, after 2 hours recovery at the room temperature.

8.5 Operating at the high temperature

At +40°C, with the rated voltage 100-240Vac charged to the primary and unloaded and full Load on the secondary 8 hours, no abnormality in electric and mechanical characteristic, after 2 hours recovery at the room temperature.



9. COOLING:

Cooling shall be with natural convection cooling.

10. Burn-in

The burn-in test will be performed at least 4 hours at centigrade degrees under full load Condition.

11. Referenced standard:

11.1 EMI Standards

Reference EN50082-1, EN55022-B, GB-17625.1-2003, GB-9254-1998

11.2 Safety Standards

The adapter shall be meet certified with the following safety standards.

[UL60950-1](#), [EN60950-1](#), [GB4943-2001](#)

12. MOUNTING CONNECTORS:

12.1 AC Input Connector

Spec : [2Pin](#) ([PSE](#) [PIN](#)) 半包胶绝缘

12.2 DC Output Cable

Wire : (Optional) [UL2468](#) [20AWG](#) [L=1.2m](#) [Color: Black](#)

Plug : (Optional) [3.5*1.35*8.5mm](#)

13. MECHANICAL FEATURES:

13.1 Dimension(Size)

Length: [82.5mm](#)

Width: [52.5mm](#)

Height: [38mm](#)

13.2 Weight

The Power Supply unit : [150±10g](#)

13.3 Vibration and shock

No Evidence of any mechanical or functional damage after the vibration and shock testing.

Test conditions		Acceptance Criteria
Frequency	10-55Hz	Nominal functional test should be satisfied after the test
Sweep	For each axis(X,Y,Z)	
Displacement	0.15mm	
Periodicity	10	

13.4 Drop test

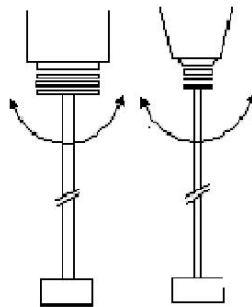
After Dropping from a height of 100 cm onto a wooden floor , Dropping at 6 sides totally, NO breakage should be happened in the test piece.

13.5 Bending Test

By using bending test equipment, to test each cord protect portion of DC Plug and AC Adapter with following conditions.

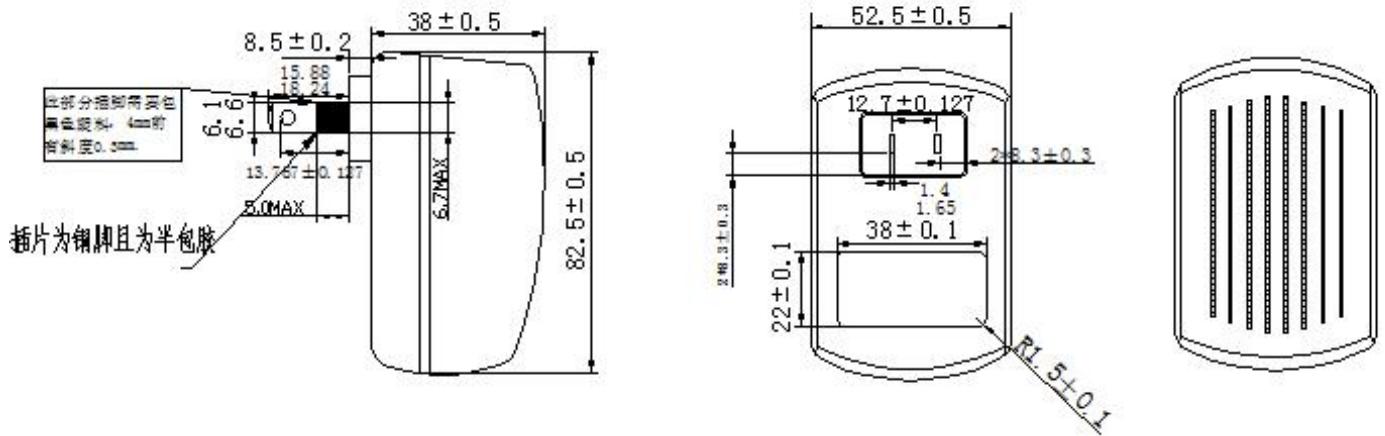
Test Conditions	
Weight for hanging	2 N (200g)
Angle of rotation	$\pm 60^\circ$
Bending cycle	40 times / min.
Reciprocating time	2000

After the test,All function must work completely.Any internal changes must not be occurred which will damage the functions and cosmetics no broken and disconnection.



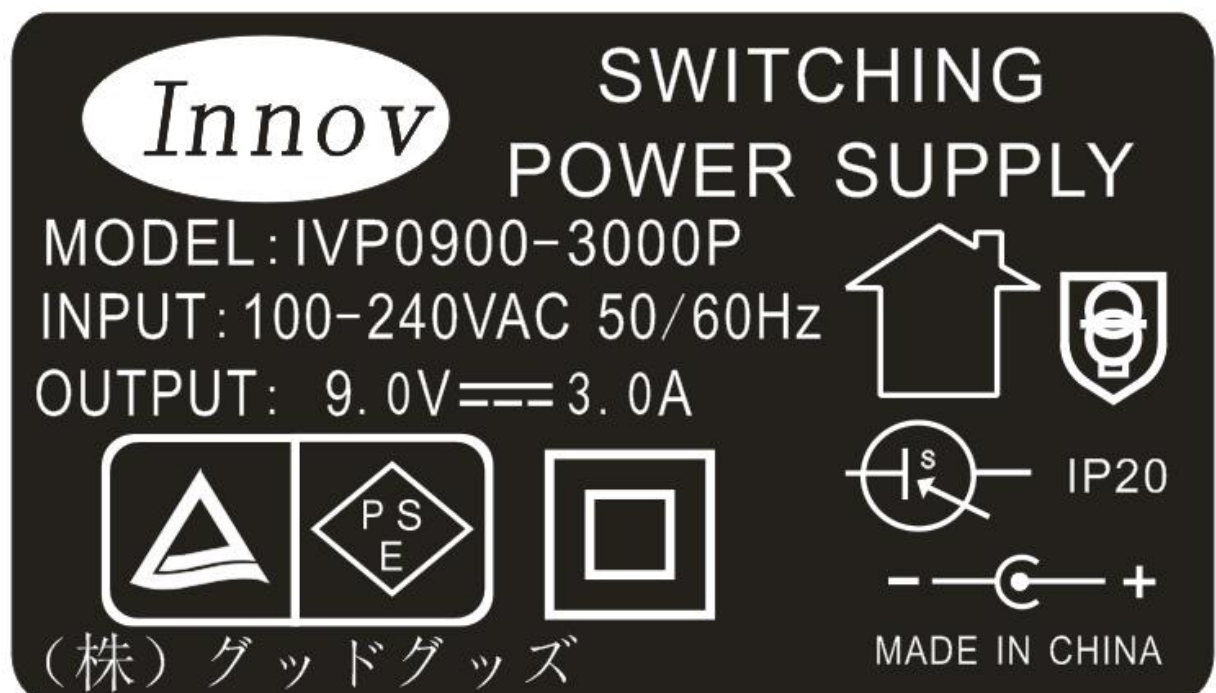
14 . DIAGRAM DATA:(See to attach the diagram)

14.1. APPEARANCE DRAWING:(Unit:mm) 半包胶绝缘

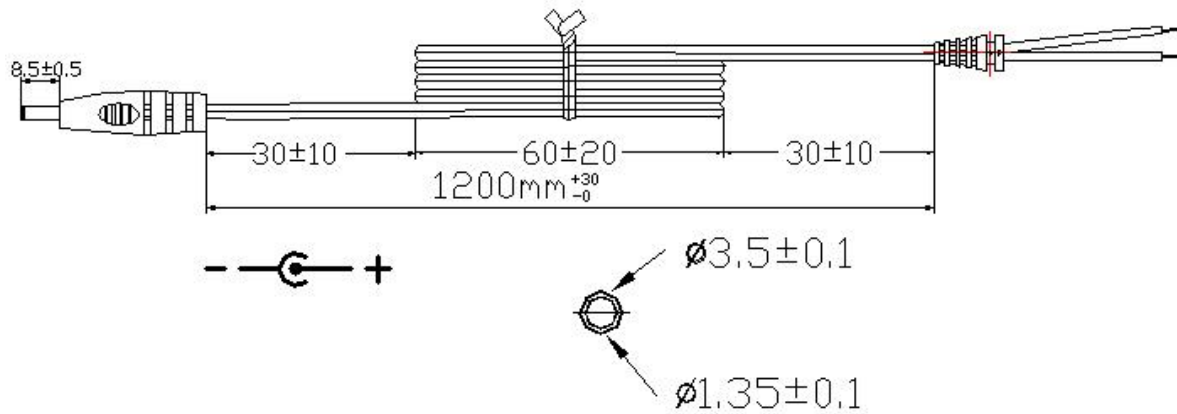


14.2. NAME PLATE: (Unit:mm)

NOTE: MATERIAL:POLYESTER COATING:0.10+/-0.03mm



14.3. DIMENSION OF OUTPUT PLUG & DC CORD:(Unit:mm)



Remarks:

- 1) UL2468 20AWG L=1.2m Color: Black
- 2) PLUG:3.5*1.35*8.5mm

**15.TEST RESULT:****15.1 Parameter (room temperature) Test**

Reference Document(参考文档)		Test Operate Direct(测试操作指引)			
Test Conditions 测试条件	Test Location(测试地点)		Laboratory		
	Stabilization(稳定时间)		1Hour/s		
	Temperature(温度)		25 °C		
Test Equipment 测试仪器	Equipment 仪器	Manufac-turer(厂商)	Type 类型	Number 编号	Checkout Date(校验日期)
	AC POWER SOURCE 电源	Parwa	5000	lvp-yf-01	2017.12
	ELECTRONIC MAINFRAM 电子负载	Prodigit	3302C	lvp-yf-02	2017.12
	OSCILLOGRA PH 示波器	Tektronix	TDS 1001B	lvp-yf-05	2017.12
	Multimeter 万用表	Lwdqgs	MY-60	lvp-yf-10	2017.12
	可程式恒温恒湿 试验机	MLH	GDJS-100	lvp-yf-6	2017.12
	电磁兼容测试仪	FORWAR D	EMC300A	lvp-yf-8	2017.12
Test Sample 测试样机	Sample Num. 样机编号	1#,2#,3#,4#,5#			
	Date Code 生产日期				
Test Results 测试结果	PASS				

测 试	确 认	批 准
TESTED BY	DESIGNED BY	APPROVED BY



15.2 Test Data 测试数据

	Test Item 测试项目	Test Condition 测试条件	Rating Min. 额定范围	Room Temperture 常温				
				1#	2#	3#	4#	5#
INP UT PAR AMC TIC(输入 参数)	Full Load Power 满载功率	Vin.100	<33W					
		Vin.240						
	Inrush Current 冲击电流	Vin.100	<30A					
	Input Current 输入电流	Vin.100	<800mA					
OUT PUT PAR AME TIC(输出 参数)	Output Voltage @Input Voltage 100V	0A	8.80-9.30V					
		CV8.0V	2.70-3.30A					
	Output Voltage @Input Voltage 240V	0A	8.80-9.30V					
		CV8.0V	2.70-3.30A					
	Ripple 纹波	0	<300mV					
		CV8.0V	<300mV					
	Insulation R.(绝缘电阻)	500Vdc	>100M					
	Hi-Pot(高压)	3000Vac	≤5mA					
测 试		确 认			批 准			
TESTED BY		DESIGNED BY			APPROVED BY			